

THE NEVADA TRAVERSE

Journal of the Professional Land Surveyors of Nevada

Vol.47, No.1 ■ March 2020



Inside This Issue:

Nevada Corner Records

By: Michael Kidd, PLS Pg. 5

Certified Federal Surveyor (CFedS) Program

By: Steve Parrish, PLS Pg. 9



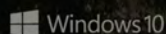
Windows 10
Intel Pentium Processor
New Trimble Access Software
Advanced 7-inch Touchscreen
Rugged All-Condition Build
User-Interchangeable Modules
Exceptional Ergonomics
Rear and Front-Facing Camera



Big Screen. **Giant Potential.**

Introducing the Trimble TSC7.

Born from a 20-year legacy of industry expertise and paired with new Trimble Access software, this class-leading device delivers complete field-to-office connectivity. It's rugged. It's reliable. And it puts the entire Trimble ecosystem in the palm of your hand. With the TSC7, you don't just see the big picture. You control it.



Who's Who in NALS

Board of Directors

Greg Phillips, PLS, President
gphillips@LumosInc.com

Justin Moore, PLS, Vice President
justin@odysseyreno.com

Robert Carrington, PLS, Secretary/Treasurer
rcarrington@diamondbacklandsurveying.com

Jason Higgins, Immediate Past President
jhiggins@wmksurveying.com

Crissy Willson, Executive Director
nals@nvlandsurveyors.org

Nick Ariotti, PLS, Director
nariotti@egradig.com

Todd Enke, PLS, Director
nvpls19734@yahoo.com

Bill Ray, PLS, Director
bray@eseconsultants.com

Frank Wittie, PLS Director
ridinghigh4x4@gmail.com

COMMITTEE CHAIRS & LIAISONS

2022 Datum: Kevin Almeter
kalmeter@woodroddgers.com

Advanced Education: Trent Keenan
tkeenan@diamondbacklandsurveying.com

Board of Registration Liaisons: Jason Higgins & Kevin Almeter
jhiggins@wmksurveying.com / kalmeter@woodroddgers.com

Communications/Publications: Trent Keenan
tkeenan@diamondbacklandsurveying.com

Constitution and Bylaws: Nancy Almanzan
Nancy.Almanzan@swgas.com

Continuing Education/Conference: Nancy Almanzan
Nancy.Almanzan@swgas.com

Legislation: Robert Carrington
rcarrington@diamondbacklandsurveying.com

NDOT Working Group: Greg Phillips
gphillips@LumosInc.com

NSPS Director: Nancy Almanzan
Nancy.Almanzan@swgas.com

Nominating: Jason Higgins
jhiggins@wmksurveying.com

Professional Practices: Justin Moore
justin@odysseyreno.com

Outreach: Justin Moore
justin@odysseyreno.com

Membership: Justin Moore
justin@odysseyreno.com

Young Surveyors Network: Sarah Walker & Nick Ariotti
nvyoungsurveyors@gmail.com / nariotti@egradig.com

WFPS Delegates: Nancy Almanzan & Greg Phillips
Nancy.Almanzan@swgas.com / gphillips@LumosInc.com

Chapter Presidents

William Nisbet, Great Basin Chapter
waanelko@citlink.net

Bill Ray, PLS, Lahontan Chapter
bray@eseconsultants.com

Nick Ariotti, PLS, Southern Nevada Chapter
nariotti@egradig.com

Executive Office

NALS Executive Office
T. (888) 994-3510
E. nals@NvLandSurveyors.org

Social Links

Website: NvLandSurveyors.org
Facebook: <https://www.facebook.com/NVLandSurveyors/>
LinkedIn: <https://www.linkedin.com/company/nevada-association-of-land-surveyors>

THE NEVADA TRAVERSE

This publication is issued quarterly by the **Nevada Association of Land Surveyors (NALS)** and is published as a service to the Land Surveying profession of the state of Nevada. *The Nevada Traverse* is an open forum for all Surveyors, with an editorial policy predicated on the objective of NALS and Bylaws, Article II, which reads:

‘The purpose of the association shall be to promote the common good and welfare of its members in their activities in the profession of Land Surveying; to promote the common good and welfare of the public in terms of professional land surveying activities; to promote and maintain the highest possible standards of professional ethics and practice; to promote public awareness and trust in Professional Land Surveyors and their work.

This organization, in its activities and in its membership, shall be non-partisan, non-sectarian, and non-discriminatory.”

The publication is mailed to NALS members and similar organizations on a complimentary basis. *The Nevada Traverse* is not copyright protected. Articles, except where specifically copyright noted, may be reprinted with proper credit. Written permission to reprint copyrighted material must be secured either from the author directly, or through the editor.

Articles appearing in the publication do not necessarily reflect the viewpoints of NALS, its officers, Board of Directors, or the editor, but are published as a service to its members, the general public, and for the betterment of the surveying profession. No responsibility is assumed for errors, misquotes, or deletions as to its contents.

Article & Advertising Deadlines

January 25th, April 25th, July 25th, October 25th

To submit an article or to request information regarding advertising, please contact the NALS Executive Office

NALS Executive Office
T. (888) 994-3510
E. nals@nvlandsurveyors.org

Running an ad does not imply endorsement of that advertiser by NALS, and the editor reserves the right to not accept ads which may be in poor taste or objectionable to the policies of NALS.

SUSTAINING MEMBERSHIP \$195 Annually

INCLUDES:

- Complimentary business listing in the Traverse
- Complimentary listing on NALS website
- Member pricing on ads in the Nevada Traverse

Inside this Issue...

Featured Articles

Nevada Corner Records
By: Michael Kidd, PLSPg. 5

NRS / NAC Rule of the Month.....Pg. 7

Certified Federal Surveyor (CFedS) Program
By: Steve Parrish, PLS Pg. 9

Departments

Who's WhoPg. 1

Editor's CornerPg. 3

President's MessagePg. 4

Conference InformationPg. 12-13

Puzzle CornerPg. 16

Chapter Updates.....Pg. 17

Quarterly MinutesPg. 18-19

CORRECTION FROM LAST ISSUE

Please note, in the last issue, the article Nevada Mapping for Industrial or Commercial Development and the Requirements for Creating a Boundary by Conveyance (by Michael Kidd, PLS) figure 2 was not printed correctly. The article has been corrected and can be downloaded from the NALS website NvLandSurveyors.org – Click on Nevada Traverse

About the Cover...



Using the SX10 to scan the slide for a design revision and slide remodel at Cowabunga Bay

Photo Provided By: Robert Mooers, PLS, Diamondback Land Surveying

Do you have a cover shot you would like to submit?
Email: nals@NvLandSurveyors.org



The Editor's Corner

by Trent J. Keenan, PLS

As we enter our 47th year as an association, I must now follow behind the great tenures of Terry W. McHenry (24 years) and Carl C. de Baca (the last 5 years) as our last couple of editors. How does a guy like me follow behind these two great men? They have done such a good job keeping us informed on the hot topics and what was going on in our state, all while keeping the bulk of the content Nevada only. With so many talented and dedicated professionals that have contributed to the Traverse over these years, I personally want to thank Carl C. de Baca for taking over when Terry retired. You took on this important role and asked for nothing in return while our association was struggling financially for so many years ago. THANK YOU on behalf of all the Nevada Association of Land Surveyors! Your editorial comments will be missed!

So how did I get to become the new editor? Never did I think I'd be the editor of a publication, let alone our surveyor's association magazine. This is coming from a guy who never enjoyed English class. However, since being on the various boards from the beginning of 2007, I've always used the line while recruiting others, "if not you, who?". Well, that line was finally used against me! In our search to find a new editor over the last few months no one was interested in taking on this huge task of providing the editorial content for this magazine every quarter. So, in true fashion "if not you, who," I decided to take on this role. This couldn't be possible without the help of our current Board or without the staff of Association Management Services lead by Dorothy and Crissy. I am and will always be truly grateful for their help and expertise moving forward. Their knowledge on how an association should be ran is top notch!

Where are we going from here? I truly only had about 3 weeks from getting asked to be the editor to this first print, so I do not have a full outline for the rest of the year, but I would like to have a few new columns, such as Board Rule of the month, highlighting an NRS (Nevada Revised Statute) or NAC (Nevada Administrative Code) of the month. Adding a puzzle corner, possibly a law corner, etc. I am asking for Traverse contributors.

The Nevada Traverse is a quarterly publication sponsored by the Nevada Association of Land Surveyors. This publication is intended to be informative as well as a line of communication with our Association and fellow Land Surveyors. On behalf of this publication, all interested parties are encouraged to participate in this publication. Please send any information or articles of interest to the Editor. The entire Association will enjoy hearing from you (Taken from the Winter Edition Nevada Traverse 1977 No.4).

To follow those words up, there is a beginning to a song that fits perfectly here:

The is a song called "Read All About it, Pt. III, by Emeli Sande that says:

You have the words to change a nation, but you are biting your tongue. You spent a lifetime stuck in silence because you were afraid you would say something wrong. If no one ever hears it, how are we going to learn your song.

The way I hear these words for our profession, we all have so much to learn from each other, we just need to get involved, write it down in a column for the next Nevada Traverse, ask to have a round table discussion at the Chapter or State level? This is my 25th year in this great profession and I still have so much to learn every day and that is why I love our yearly conference. There is so much knowledge in each one of these sessions that help us in our day to day business/profession, I personally have just never had the guts to get up and speak. As I grown as a person and as a surveyor, I am breaking out of my shell, but we need more than just me, or more than just our normal speakers. We want and need new topics quarterly for this publication and every year for our conference. I am begging you to all get involved the best way you can. Help our profession!

What to expect in this edition of the Nevada Traverse?

We remember the great Kay Adams and a few of our fellow surveyors recap their working relationship with Kay as well as just talking about his reputation as a Nevada Surveyor. While looking back through some old Traverse's I found where Kay was a director on the 1975 NALS Officers List and he also sat in on a panel to discuss the newly adopted "Nevada Parcel Map Law"- Existing and Proposed Legislation (The Nevada Traverse Vol.3 Nos. 1&3). A hot topic back then! PLS2050 is a number you know as soon as you see it, it was in the correct location. That is a reputation that will live on forever and one that all of us surveyors following behind hope to obtain.

NRS/NAC Rule of the month, we highlight the NAC 625.545 Written contract required for each client. There were some changes that were enacted by the State Board of Engineers and Land Surveyors and codified by the Legislative Counsel Bureau on January 30, 2019, these should be noted and addressed on your written contracts.

We have another great article by Michael Kidd, P.L.S. discussing the history of creation of the Nevada Corner Records as well as some recent changing from the 2019 Legislative Session that created a few minor changes.

We will hear from our State and Chapter Presidents on the latest news coming out of their areas and we will have a new quarterly "What is happening this Quarter" in NALS.

I hope you enjoy this recent addition of the Nevada Traverse and will continue to help me make this a successful publication for the next 50 year. Please do your best to contribute and article or two.

Don't only practice your art, but force your way into its secrets; art deserves that, for it and knowledge can raise man to the Divine.

—Ludwig van Beethoven





The President's Message

by Greg Phillips, PLS

2020, Happy New Year, and welcome to a new decade! Unless you're one of those people who think math is important, then I'm a year early. I want to thank you all for the opportunity to be your NALS President this year. It is truly an honor and a privilege to represent our industry. A big thank you to those that have served before me including and especially our 2019 President, Jason Higgins. I believe that 2019 was a great year for our organization and that success can be attributed to Jason's hard work and leadership.

We have hit the ground running this year. I was honored to speak to the Lahontan Chapter for their January meeting and swear in the new officers. The attendance at that meeting appeared to set a recent record at 35+. It is great to see some new blood in the chapter officer positions as well as some seasoned faces that continue to support our organization at the local and state level. I look forward to visiting the Southern Nevada and Great Basin Chapters as well.

The Young Surveyor's Network (YSN) has been coming out in force and it is great to see the energy that they create. One of my goals as President this year is to support and mentor the YSN as much as possible.

We held our first Board of Directors meeting in January. Although our meeting was held right after the holidays and everyone is extremely busy, we had 100% attendance from our Officers and Directors. Thank you for your dedication and commitment! This year, I would like to focus on strengthening our committees. The Board of Directors has appointed enthusiastic volunteers to chair our committees and now we appeal to the membership to get involved and participate. If you are interested on serving on one of these committees, please reach out to the Chair or to the NALS Executive Office.

1. 2022 Datum – Kevin Almeter
2. Advanced Education – Trent Keenan
3. Communications/Publications - Trent Keenan
4. Constitution and Bylaws – Nancy Almazan
5. Continuing Education/Conference - Nancy Almazan
6. Legislation - Robert Carrington
7. NDOT Working Group – Greg Phillips
8. Nomination Committee – Jason Higgins
9. Professional Practices - Justin Moore

10. Outreach – Justin Moore
11. Membership – Justin Moore
12. Young Surveyors Network – Sarah Walker & Nick Ariotti

In addition to our committees, the NALS Board appointed liaisons that represent NALS on a state, regional, and national level. These important roles are being filled by the following

1. Board of Registration Liaison – Jason Higgins & Kevin Almeter
2. NSPS Director - Nancy Almazan
3. WFPS Delegate – Trent Keenan & Greg Phillips

To kick-off the "new decade" you will see some new features within the Traverse including a new design. Special thanks to Trent Keenan for volunteering as Editor. This is a huge role to fill and we great appreciate his efforts with the Traverse as well as his continued support of NALS. You can help by sending in articles, letters to the Editor, photos, or ideas of what you would like to see in the magazine.

We have some exciting momentum with our 2 ad-hoc committees: the NDOT working group, and the 2022 datum.

The NDOT working group ad hoc committee was formed in March of 2019 with the immediate goal of increasing accessibility to NDOT records, including right of way mapping, for the public. The ultimate goal of this committee is to bolster the profession of Land Surveying within NDOT and create direct lines of communication between NALS and NDOT. This committee was the result of an initial meet and greet between some NALS officers and the Director of NDOT, Kristina Swallow, P.E. This initial meeting was held at the Silver Legacy in Reno during our annual conference in March, 2019. We have had several meetings with NDOT staff over the last 10 months and are very close to being able to access all NDOT right of way documents online. We are at the point that NDOT is working with their software license vendor to finalize the logistics with a possible go live date in February.

The 2022 datum ad hoc committee was created later in the 2019 year. I personally have not been very engaged with discussions on the new datum until the creation of this committee. My thought was the new datum is coming and we will just adjust our practice to match that datum once they tell is what it is. I did not realize that we actually have quite the opportunity to provide input on what we want that datum to look like, and help make the models more accurately represent where we live and work. My understanding is that it may be possible for us to recreate the coordinate system zones that are not just defined by west, central, and east county lines. I would like to see us create smaller coordinate zones in the populated areas (i.e., Las Vegas Valley and Truckee Meadows/Carson City). The smaller zones could allow for a coordinate grid system at an elevation that would allow for much less distortion to get closer to ground distances. A big thank you to

CONTINUED ON PAGE 24 ►

Nevada Corner Records

by Michael Kidd, PLS

The Corner Record provides a quick convenient tool to be used by a land surveyor to help preserve land survey corners that may be in danger of being disturbed or obliterated.

Assembly Bill 709 provided for the perpetuation of public land survey corners and was introduced by a third generation Nevada rancher, Norman Glaser from Halleck, Nevada. Norman Glaser served six terms as a State Assemblyman and two terms with the Nevada State Senate. The following is a portion of Assemblyman Glaser's testimony before the Assembly Committee on Government Affairs March 20, 1969:

"This problem arises from many of the very old surveys in some areas of the state where the marking of survey corners was not substantial and through the years they may have been obliterated or have become obscure."

Assembly Bill 709 unanimously passed out of Committee and became Nevada law in 1969.



Norman Glaser, circa 1970

NRS Chapter 329 was added to the Nevada Revised Statutes in 1969 by Nevada's 55th Legislative Session. This legislation allowed for the perpetuation of corners with the filing of a Corner Record and was intended to be a one-off application. The Corner Record, as defined by Nevada Revised Statutes Chapter 329 and the Nevada Administrative Code 329, may be both underutilized and overutilized.

The 2019 Legislative Session created a few minor changes to NRS 329. These changes to NRS 329 had two main impacts. The first was more of a house-keeping effort to bring the Statute in line with how corner records are being utilized. Similar to a few other western states, Nevada's Corner Record Statute made

reference to public land corners and could have been interpreted to mean Corner Records could only be used for "Public" land corners. The 2019 change revised the language to apply to all land survey corners.

The second change had the effect of limiting the number of corners that can be shown in a Corner Record document to six, **NRS 329.140 2. (a)**. This was changed to restrict the forty-plus-page Corner Records that were being filed at the end of a roadway project. This volume of re-monumentation work should be memorialized at the completion of a roadway project with a Record of Survey.

The underutilization of the Corner Record could be improved by land surveyors taking notice of a survey corner in the field that might be in danger of being disturbed. The land surveyor in the field is in the best position to notice when a corner may need to have accessories added to help perpetuate the corner location. At a minimum, if that land surveyor is pressed for time, he or she should reach out to the local City or County surveyor to make them aware of a particular corner that may soon be lost or damaged.

Helpful Hint:

At the end of each Statute item, in blue text, there is a year followed by a number. The number after the year refers to the page for that item in what was published from that particular legislative session.

NRS 329.020 Declaration of policy. *It is the purpose of this chapter to protect and perpetuate public land survey corners and other corners, along with information concerning the location of such corners by requiring the systematic establishment of monuments and recording of information concerning the location of such corners, thereby providing for property security and a coherent system of property location and identification, and eliminating the repeated necessity for re-establishment and relocations of such corners once they are established and located.*

(Added to NRS by 1969, 630; A 2003, 77; 2019, 1531)

Through the years, I have had numerous conversations with land surveyors that did not think a corner record would be required if all they did was replace a missing corner from a previously recorded map, from another land surveyor. Their reasoning did not take into consideration the material discrepancy created with a monument in the ground that had no record information to support the placement of that monument as required by NRS 625.340 (3 & 4). What if, in the future, all monuments from the original map are destroyed and the only remaining monument is the monument placed by the land surveyor that did not see the need to file a corner record?

Typical applications for a Corner Record would be:

- Adding monument accessories, such as reference monuments or a witness corner, to any existing survey monument. This is especially useful when finding an original monument, thought to be lost, and maybe has not seen daylight for fifty years or more.
- Any survey monument that appears to be in danger of being destroyed by construction or other activities.
- Any survey monument found missing but previously set reference monuments are still in place.
- A survey monument damaged in some way that would benefit by being reset.

CONTINUED ON NEXT PAGE ►

- The re-monumentation of a newly repaved roadway project that has six or fewer survey monuments to be perpetuated.
- Typical applications where a Corner Record would not be appropriate:
- The re-monumentation of a newly repaved roadway project that has more than six survey monuments to be perpetuated. This should be completed with a Record of Survey.
- Setting a survey monument that the land surveyor did not have a previous position for and the monument location required new survey retracement work to establish the position. All new land surveying work should be shown in a Record of Survey.
- There are a few basic requirements called out in **NAC 329.010** as it relates to content and form for a Corner Record in Nevada. The requirements for the Surveyor's Certificate are shown below.

The certificate must be in the following form:

SURVEYOR'S CERTIFICATE

I, (name of professional land surveyor),
a Professional Land Surveyor registered in the State
of Nevada, certify that:

1. This corner record represents the establishment
or restoration of a corner or accessory to a corner
conducted under my direct supervision.

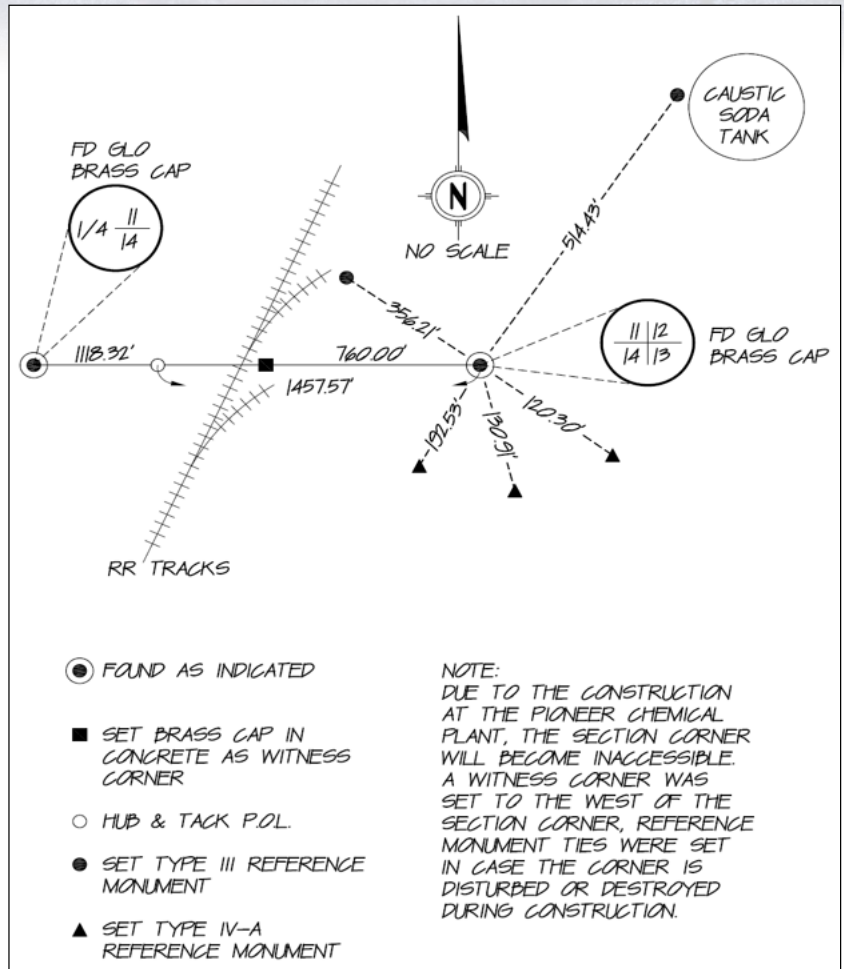
2. The monument or accessories perpetuated lie
within (section, township, range, meridian, county and city, if incorporated), and the establishment or restoration was
completed on (date).

3. This corner record has been filed pursuant to NRS 329.140 or 329.150 and complies with the provisions of NAC 329.010 and any
local ordinances in effect on the date that the establishment or restoration was completed.

4. The monument or witness monument and accessories found are of the character shown, occupy the positions indicated and are of
sufficient durability.

(Validated seal of the professional land surveyor);

(Name and license number of the professional land surveyor printed below the seal).



Other than some of the basic information required by NAC 329 and NRS 329, the land surveyor working in Nevada has complete freedom to show whatever information they feel would be useful for any land surveyor following behind their work. This information could be in the form of a CAD drawing or as simple as a copy of the field notes. Unlike some of the requirements in other states, Nevada does not have a standard form that must be utilized when completing a Corner Record. Also, Corner Records and Records of Surveys do not require a technical review by the County prior to recording in Nevada.

The exhibit above right is a re-creation of a Corner Record from 1990 in Township 22 South, Range 62 East. This hand-written Corner Record was recently used to reestablish the location for the section corner. The only accessory to the section corner that remains today is the brass cap witness corner. The section corner, and all other accessory monuments, have been destroyed in the last 30 years.

This article is intended to provide background information on Corner Records. Professional Land Surveyors should use their best judgment on the proper use of the available tools to memorialize land survey work completed in the field.

An important thing to keep in mind, the Corner Record is a quick convenient tool available to land surveyors in Nevada to enter information into the record so that other land surveyors may benefit from this shared information in the future.

All comments, feedback and other opinions are welcome.

Michael Kidd, P.L.S. Michael.Kidd@cityofhenderson.com



NRS / NAC Rule of the Month

NAC 625.545 Written contract required for each client. (NRS 625.140) Before performing any work, a licensee shall enter into a written contract with each client for whom the licensee will perform work. The written contract must include, without limitation, provisions specifying:

- 1. The scope of the work;
- 2. The cost for completion of the work; and
- 3. The anticipated date for completion of the work.

(Added to NAC by Bd. of Professional Eng'rs & Land Surv. by R152-09, eff. 10-15-2010)

**The following changes were adopted as temporary regulations December 10, 2018, by the State Board of Professional Engineers and Land Surveyors and codified by the Legislative Counsel Bureau on January 30, 2019.*

LCB File No. R085-18

1. Provisions specifying:

- {1-} (a) The scope of the work;
 - {2-} (b) The cost for completion of the work; and
 - {3-} (c) The anticipated date for completion of the work
- [.] ; and

2. A disclosure as to whether the licensee currently maintains a policy of professional liability insurance.

Editorial note:

Why do we need to sign a contract? Can't we just do this on a handshake? Can't I trust you? Can't you trust me? These days are long gone, the days of "we will worry about the paperwork later, let's just get started now" cannot happen anymore. Projects are moving so fast now, before you know it, you have already finished and delivered the survey and you haven't even sent the contract to be reviewed & supplemental paperwork, such as insurance certificates, etc. This type of practice does no one any good and sometimes without a contract, you may not have insurance coverage as well. Contracts bind parties to their duties; Contracts provide security to both parties when the relationship goes south; Contracts can help secure payment. No one likes to not get paid for work performed and a binding contract provides the information needed to be paid for services rendered.



NALS Remembers...



Kay Adams, PLS

It is with great sadness that we announce the passing of Kay Adams, PLS 2050. Kay was the last "elected" Clark County Surveyor. Kay left Clark County in 1975 and went to work for GC Wallace. NALS members hold Kay in high regard. Below are a few recollections from our members.

Kay was a legend in our surveying community and will be sorely missed.
~ Nicholas Ariotti, PLS

Kay's work for the County is a legacy to the public good. He created the Virgin Valley control network and did amazing work in Searchlight, which the County Surveyor's office completed after his departure. Kay Adams was a true professional and, in part, I modeled my professional ethics after his.
~ Brett N. Lane, PLS/WRS, Clark County Surveyor (1989-2011)

In my time with the Clark County Surveyor's Office there were several PLS numbers we watched for due to the surveyor's reputable and unambiguous work. Mr. Kay Adams PLS 2050 was at the top of that list. His reputation was well recognized and accepted before he became Clark County Surveyor and continues to have the same inspirational effect today for many of us who know his # and come across it in the field and in our research. He is a legend in our community; he inspired, mentored, guided and helped many of the professionals.
~ Gene Sawyer, PLS

Although I never actually worked under the responsible charge of Kay Adams, P.L.S. 2050, I certainly began my GCW career in 1995 under the huge shadow of his fine repute. Many of the staff that I came to lead in the 90's had worked under his direction, and my early times here included constant reminders of "that's how Kay Adams wanted it!". As I worked through that constant reminder, slowly moving forward with my own vision of "wrong is wrong; do it right" as time went on, I found that most of his principles and directives were pretty darn close to what I believed. This was further evidenced by the experience of locating and using some of his many monuments in the field. I came to realize that he was just a "real good Surveyor"! Although our nature as surveyors is to question everything, almost every one of his monuments, maps, and legal descriptions were found to be correct, clear, and definitive. To me, that's a great Surveying legacy from a man of fine character!
~ Paul Burn, PLS



Professional Listings

Contact the Editor to place your business card!



VERTICAL MAPPING RESOURCES
1610 Montclair Ave, Suite D
Reno, NV 89509

Locations in
NV, AZ, CA,
OR, ID, TX

(775) 737-4343
verticalmapping.com



Jerry Juarez, P.L.S.
Survey Manager

Manhard
CONSULTING
9850 Double R Boulevard • Suite 101
Reno, NV 89521
direct: 775.748.3500 ext. 4720
cell: 775.313.3357
jjvarez@manhard.com



**LAND SURVEYORS
CIVIL ENGINEERS
LAND USE PLANNERS**
1150 CORPORATE BOULEVARD • RENO, NEVADA 89502
775-856-1150 MAIN • 775-856-1160 FAX • CFARENO.COM

ROBERT O. LARIVIERE, P.L.S.
President
775-240-0372 CELL • 775-856-7072 DIRECT
BLARIVIERE@CFARENO.COM

CIVIL ENGINEERING • STRUCTURAL ENGINEERING • SURVEYING •
GEOTECHNICAL ENGINEERING • LANDSCAPE ARCHITECTURE • PLANNING
CONSTRUCTION SERVICES • MATERIALS TESTING



David Crook P.L.S., W.R.S. – Project Manager, Surveying Division

178 South Maine Street • Fallon, NV 89406
775.423.2188 • dcrook@lumosinc.com
www.lumosinc.com

CIVIL ENGINEERING • STRUCTURAL ENGINEERING • SURVEYING •
GEOTECHNICAL ENGINEERING • LANDSCAPE ARCHITECTURE • PLANNING
CONSTRUCTION SERVICES • MATERIALS TESTING



Greg Phillips, P.L.S., W.R.S. – Director, Surveying Division

800 East College Parkway • Carson City, NV 89706
775.883.7077 • gphillips@lumosinc.com
www.lumosinc.com



Heritage Surveying

Dennis W. Layton, P.L.S., CFedS
President

1895 Village Center Circle
Las Vegas, Nevada 89134
Office (702) HSA-MAPS (474-6277)
Cell: (702) 255-1005
Fax: (702) 255-6902
dlayton@hsm4maps.com

Boundary
Topography
ALTA Surveys
Mapping
Land Divisions
Construction Layout



MONSEN ENGINEERING SUPPLY OF NEVADA
General Manager

Mike Grill
5115 S. Valley View Blvd.
Las Vegas, NV 89118

Phone (702) 220-6505
Fax (702) 220-6554
Cell (702) 524-0960
Toll Free (800) 821-0672
mike@monseneengineering.com

SIERRA SURVEYING, INC.

CHARLES "DAN" CHURCH, P.L.S.

555 HOLCOMB AVENUE
RENO, NEVADA 89502
EMAIL - sierrasurveying@sbcglobal.net

TEL 775-828-5004
FAX 775-337-0313



CONSULTING ENGINEERS • PLANNERS • SURVEYORS

Gene D. Krametbauer, P.L.S.
Principal

2727 SOUTH RAINBOW BOULEVARD LAS VEGAS, NEVADA 89146-5148
TEL (702) 873-7550 FAX: 362-2597 EMAIL: genek@vtnv.com



MONSEN ENGINEERING INC.
General Manager and Service Manager

Martin Crook
Phone (775) 359-6671
Fax (775) 359-6693

1140 Financial Blvd. #400
Reno, Nevada 89502
Toll-Free (800) 821-0672
martin@monseneengineering.com



Curtis J. Chapman, PLS
Vice President
Geomatics

Stantec
6995 Sierra Center Parkway Suite 200, Reno NV 89511-2279
phone: (775) 398-1203
cell: (775) 233-1818 fax: (775) 850-0787
curt.chapman@stantec.com



CONSULTING ENGINEERS • PLANNERS • SURVEYORS

Anthony Zicari, P.L.S.
Principal

2727 SOUTH RAINBOW BOULEVARD LAS VEGAS, NEVADA 89146-5148
TEL (702) 873-7550 FAX: 362-2597 Email: tonyz@vtnv.com



Robert L. Carrington, PLS, WRS
rcarrington@diamondbacklandsurveying.com

6140 Brent Thurman Way
Suite 230B
Las Vegas, NV 89148

www.diamondbacklandsurveying.com
Nevada • California • Utah • Arizona • Washington

O: 702.823.3257
C: 702.340.8649
F: 702.933.9030



Trent J. Keenan, PLS, WRS, CFedS
tkeen@diamondbacklandsurveying.com

6140 Brent Thurman Way
Suite 230B
Las Vegas, NV 89148

www.diamondbacklandsurveying.com
Nevada • California • Utah • Arizona • Washington

O: 702.823.3257
C: 702.596.3257
F: 702.933.9030



Todd A. Enke, PLS
Survey Director
todd@rci-nv.com

340 N. Minnesota St.
Carson City, NV 89703
775 / 883-1600

P.O. Box 11796
Zephyr Cove, NV 89448
775 / 588-7500

**Your
Business Card
Here**

**Your
Business Card
Here**

**Your
Business Card
Here**

**Your
Business Card
Here**

**Your
Business Card
Here**

**Your
Business Card
Here**

Certified Federal Surveyor (CFedS) Overview

by Steve Parrish, PLS

The CFedS program was originally developed "to enhance the level of knowledge and expertise in the professional land surveying community for work performed in Indian Country." It was developed by BLM Cadastral Surveyors and BIA Realty. It is one of the strategies in the Fiduciary Trust Model. The FTM (2004) was written as a 'road map' for the Office of Special Trustee (OST) for American Indians. The OST was established in 1996 to assist with Indian trust management for beneficiaries.

When the FTM was created, the Department recognized that accurate trust and boundary management begins with good surveys and that the private sector provides an excellent resource for accomplishing these surveys. The CFedS training prepares private land surveyors to work on Indian and Alaska native lands, which have some unique survey issues. Over the years, the CFedS program's application has been expanded to include boundary work for all federal interest lands.

What is a CFedS?

A Certified Federal Surveyor (CFedS) is a state licensed land surveyor who has successfully completed the CFedS certification process. CFedS may perform a wide range of cadastral services within the state(s) he or she is licensed to practice land surveying. Certain services will be under the direction and control of the appropriate BLM Chief Cadastral Surveyor. CFedS can provide more avenues for accomplishing cadastral services for Indian trust lands and other federal interest lands.

The core curriculum consists of 7 taped courses. The instructors are surveyors from BLM, USFS (ret.), Office of the Solicitor and the BIA. It is very comprehensive, and from the feedback that we have received, it has been very rewarding for those certified. The first class graduated in May, 2007. There are continuing education courses, which are required in order to maintain the CFedS certification.

Current Status of the CFedS Program

The CFedS Program is continuing on solid financial ground, with a consistent bank balance of about \$200,000. New trainees are registering every month and most of the CFedS are keeping current on their Continuing Education (CE) credits. There are currently about 560 active CFedS and about 116 active trainees. The CFedS Program allows LSIT trainees to become CFedS Candidates. As of December there were 4 active CFedS Candidates, and 9 active CFedS Candidate Trainees. Six (6) CFedS trainees successfully passed the October 4, 2019 final exam.

Most of our software platform is based on 2005-2006 software technology and we recognize that an upgrade is needed. Flash, Windows 10, and hardware advancements have required us to

frequently seek work-arounds to enable CFedS and Trainees to use the CFedS course hard drive and several of the formats we use for our CE courses. We are exploring available and affordable ways to upgrade our course materials to be compatible with other devices that are being used in today's fast paced computer environment.

Our CFedS Panel presently has seven (7) members. We have two (2) BIA related Panel vacancies that our Program Manager, Janet Wilkins, is working on filling. Our CFedS Panel recognizes the need to update the technology that is being used for the delivery of CFedS courses. Many CE courses are delivered through DVDs and we know that DVD drives are mostly obsolete in the newest technology. Our Panel is at the beginning stages of discussing the best ways to address these issues. The Panel intends to work with NSPS over the next several months to find solutions and efficiencies for the CFedS Program that will contribute to the sustainable delivery of the CFedS Program courses.

In order to facilitate this effort, the CFedS Panel has created a Technology Committee to research and review the current status of the program course content delivery system and make recommendations for improvements. The CFedS Panel also created an Outreach Committee to make recommendations for future outreach efforts, and also a Continuing Education Committee which will work directly with the BLM to identify and create course content for future CE courses. We are also working closely with a permanent BLM Cadastral Surveyor, through our Phoenix based National Training Center (NTC), for advice on our CFedS course materials.

The CFedS program intends to provide additional variety in the CE course offerings. As part of our outreach efforts, we are evaluating the possibility of offering our CE courses to a broader group in the land surveying community. A variety of State Surveyor Associations, particularly in the Western States, have requested CFedS qualifying workshops. In 2019, we provided CFedS workshops in CO, AK, MT, WA (twice), CA/NV, and AZ with 194 CFedS attendees and attendance from non CFedS participants. Along with a presentation in Fresno we have requests for CFedS workshops in ND, UT, CO, and Las Vegas, NV in February & March of 2020.

Steve Parrish communicates with CFedS on an almost daily basis through their Continuing Education (CE) requirements and in response to the frequent questions and suggestions he receives about the Course content. He hears overwhelming support, and positive comments, about the value of the CFedS Program for its content and overall guidance in working with federal interest lands. If you have questions and/or suggestions please contact the CFedS program at cfedspm@cfeds.org.

Steve Parrish, PLS, CFedS CFedS Training Coordinator
CFedS Panel Chairperson
cfedstc@cfeds.org



SURV-KAP[®]

THE LANDMARK NAME IN SURVEY PRODUCTS
Exceptional Customer Service

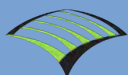
- REBAR & PIPE CAPS
- CONCRETE MARKERS
- SURVEY MONUMENTS
- SECTIONAL ROD MONUMENTS
- ACCESS COVERS
- WASHERS & NAILS
- SUBSURFACE MAGNETICS
- STAMPING TOOLS
- SURVEY TOOLS & ACCESSORIES



CALL OR ORDER ONLINE!



520-622-6011 • 800-445-5320 • FAX 520-792-2030 • SURV-KAP.COM



WOOD RODGERS



Wood Rodgers provides photogrammetry and aerial mapping services utilizing our fleet of unmanned aerial systems (UAS). We have the ability to capture oblique imagery and video, model surfaces, produce cross sections, compute volumes, surveying vertical structures, monitor mining and construction sites, and detect change over time. Our FAA licensed pilots ensure data is collected in the safest way and ensuring regulatory procedures. Our licensed land surveyors and photogrammetrists ensure your data meets accuracy standards you need for your project each and every time.

Applications

Surveying

- Topographic and planimetric maps
- Elevation and terrain models
- Orthorectified mosaic imagery

Mining

- Pit and leach pad volume measurements
- Disturbance and reclamation monitoring
- Base maps for mining claims
- Site documentation for regulator permitting

Monitoring & Inspection

- Geological surface monitoring
- Structures and facility imagery and video
- Change detection over time
- Removing personnel from dangerous situations

GIS

- Imagery and elevation layers for databases
- Imagery classification and analysis

Contacts:

Kevin Almeter, PLS – Survey & Mapping Manager

Phone: (775) 828-5687

Email: kalmeter@woodrogers.com

Michael Detwiler, LSI – Photogrammetrist

Phone: (775) 828-5688

E-mail: mdetwiler@woodrogers.com



**WOOD RODGERS
ADVANCED TECHNOLOGY**

PHOTOGRAMMETRY AND AERIAL MAPPING

Custom Survey Markers & Monuments • Signs & Witness Posts • Flagging & Targets • Nails & Washers

Survey Marker

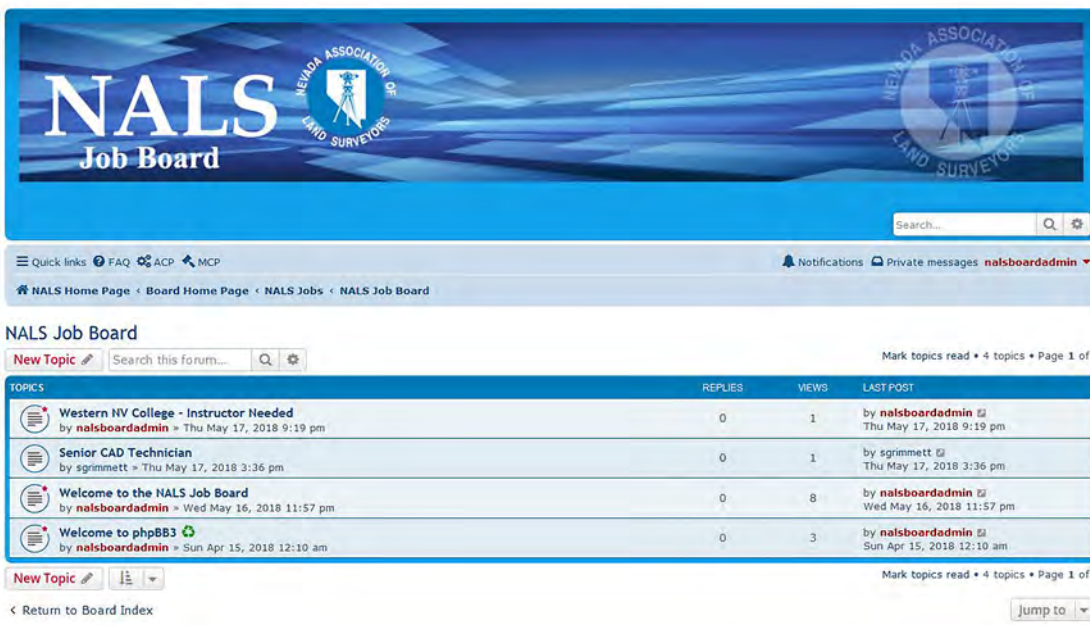


Berntsen
Marking the Infrastructure of the World™

877-686-8561 | www.berntsen.com/nevada

NALS Launches Job Board

Visit the NALS Website at: NvLandSurveyors.org



NALS Job Board

Quick links: FAQ, ACP, MCP





Notifications Private messages nalsboardadmin

NALS Home Page Board Home Page NALS Jobs NALS Job Board

NALS Job Board

New Topic Search this forum...

Mark topics read • 4 topics • Page 1 of 1

TOPICS	REPLIES	VIEWS	LAST POST
 Western NV College - Instructor Needed by nalsboardadmin • Thu May 17, 2018 9:19 pm	0	1	by nalsboardadmin Thu May 17, 2018 9:19 pm
 Senior CAD Technician by sgrimmitt • Thu May 17, 2018 3:36 pm	0	1	by sgrimmitt Thu May 17, 2018 3:36 pm
 Welcome to the NALS Job Board by nalsboardadmin • Wed May 16, 2018 11:57 pm	0	8	by nalsboardadmin Wed May 16, 2018 11:57 pm
 Welcome to phpBB3 by nalsboardadmin • Sun Apr 15, 2018 12:10 am	0	3	by nalsboardadmin Sun Apr 15, 2018 12:10 am

New Topic

Mark topics read • 4 topics • Page 1 of 1

Return to Board Index

Jump to

NALS has launched a new job board to help employers fill vacancies and members search for new opportunities. The job board is a separate system from our members' portal, to post you will need to register and follow the onscreen prompts. Registration is free. You do not have to register to view postings.

MARK YOUR CALENDAR - REGISTER TODAY!

VISION FOCUS ON THE FUTURE

APLS-CLSA-NALS Tri-State Conference

March 28-31, 2020

Luxor Hotel

Las Vegas, NV

FEATURED SPEAKERS:

Gary Kent, PLS

John Stahl, PLS

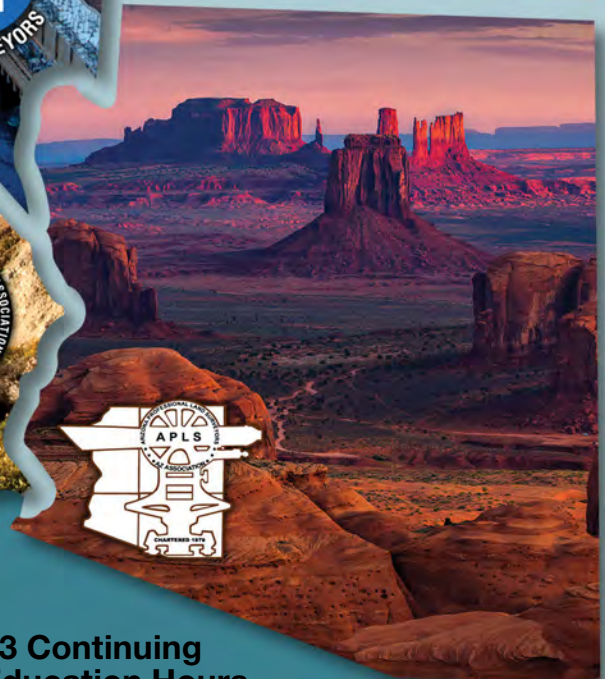
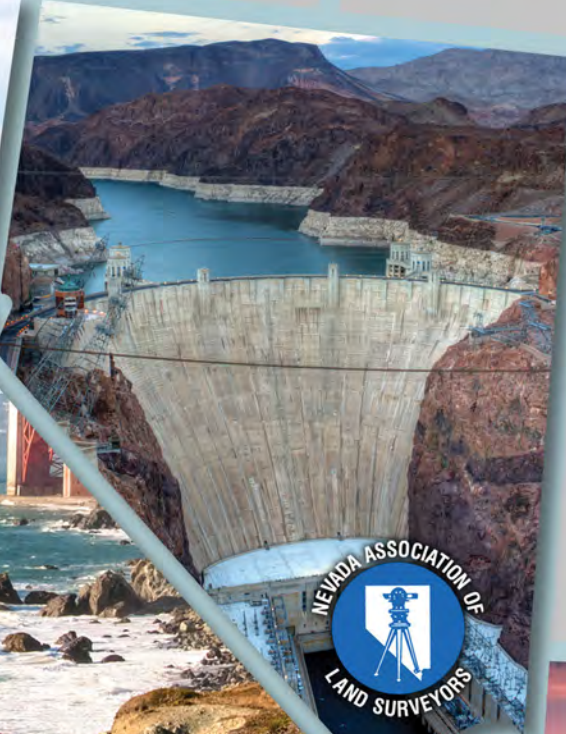
Michael Dennis, PLS

Steve Parrish, PLS

**SILENT & LIVE AUCTIONS
EXHIBIT & VENDOR DEMOS**

**23 Continuing
Education Hours**

**Registration Information: PLSeducation.org
conference@PLSeducation.org | 888.944.3510 | 707.578.4406 Fax**



APLS-CLSA-NALS 2020 CONFERENCE REGISTRATION

NAME (First/Last)	NICKNAME or NAME (as you wish it to appear on your badge)	
COMPANY		
ADDRESS		
CITY	STATE	ZIP
PHONE	FAX	
E-MAIL		
MEMBER #	PLS #	
SPOUSE/GUEST (if attending – see Spouse/Guest Registration below)		

MEMBER REGISTRATION

	BY MAR 6	AFTER MAR 6	AMOUNT
Conference (Saturday - Tuesday)	\$525	\$575	\$ _____
Includes: Saturday through Tuesday Conference workshops and sessions. Includes Saturday, Sunday, and Monday Luncheons, Sunday IceBreaker Reception and Monday Scholarship Auction.			
Conference (Sunday - Tuesday)	\$425	\$475	\$ _____
Includes: Sunday through Tuesday Conference workshops and sessions. Includes Sunday, and Monday Luncheons, Sunday IceBreaker Reception and Monday Scholarship Auction. Does not include Saturday workshops or sessions			
Conference One Day	\$225	\$275	\$ _____
Select Day: <input type="checkbox"/> Saturday <input type="checkbox"/> Sunday <input type="checkbox"/> Monday <input type="checkbox"/> Tuesday			

NON-MEMBER REGISTRATION

	BY MAR 6	AFTER MAR 6	AMOUNT
Conference (Saturday - Tuesday)	\$625	\$675	\$ _____
Includes: Saturday through Tuesday Conference workshops and sessions. Includes Saturday, Sunday, and Monday Luncheons, Sunday IceBreaker Reception and Monday Scholarship Auction.			
Conference (Sunday - Tuesday)	\$525	\$575	\$ _____
Includes: Sunday through Tuesday Conference workshops and sessions. Includes Sunday, and Monday Luncheons, Sunday IceBreaker Reception and Monday Scholarship Auction. Does not include Saturday workshops or sessions			
Conference One Day	\$325	\$375	\$ _____
Select Day: <input type="checkbox"/> Saturday <input type="checkbox"/> Sunday <input type="checkbox"/> Monday <input type="checkbox"/> Tuesday			

OTHER REGISTRATION

Spouse/Guest Registration	\$225	\$ _____
Includes entrance to Exhibit Hall, Sunday Icebreaker Reception, Sunday, Monday, and Tuesday Lunch and Monday Scholarship Auction.		
Full-time Student Registration	\$225	\$ _____
Must attach current student ID. Includes Conference Registration (Sunday through Tuesday), Sunday, and Monday Luncheons, Sunday IceBreaker Reception and Monday Scholarship Auction. Does not include Saturday (all day).		

PHOTO/VIDEO DISCLAIMER: By registering for and attending this conference, you agree that your image may be taken during the conference and used at any time, without further notification, for printed materials, websites, social media and other marketing purposes.

EXHIBITOR DISCLAIMER: By registering for and attending this conference, you agree that your contact information may be provided to exhibitors for a one-time use in providing you information regarding their products/services.

CANCELLATIONS: To receive a refund on registration fees (less a \$50 cancellation fee), all cancellations must be received in writing no later than March 6, 2020. No refunds after March 6, 2020. Substitutions welcome – additional fees may apply, contact the conference office at: (888) 994-3510 for more information.

OPTIONAL ACTIVITIES

		AMOUNT
Extra Sunday Lunch Ticket	@ \$55	\$ _____
Extra Monday Lunch Ticket	@ \$55	\$ _____
Extra Sunday Icebreaker Ticket	@ \$55	\$ _____
Extra Monday Auction/Dinner Ticket	@ \$55	\$ _____
Continuing Education Certificate	\$25	\$ _____
Student Assistance Donation (<i>Suggested Donation \$20</i>)		\$ _____

PAYMENT INFORMATION

Total Enclosed \$ _____

☐ Check Enclosed (Checks payable to A-C-N Conference)

Charge to: ☐ Visa ☐ MasterCard

CARDHOLDER NAME _____

CARD # _____

EXP. DATE _____

CVV# _____

BILLING ZIP CODE _____

AUTHORIZED SIGNATURE _____

MAIL TO:
A-C-N Conference Office
526 South E Street
Santa Rosa, CA 95404

FAX TO: (707) 578-4406
QUESTIONS?
(888) 994-3510
conference@plseducation.org

VISION > FOCUS
2020 ON THE FUTURE
APLS-CLSA-NALS Tri-State Conference
March 28-31, 2020 » Luxor Hotel » Las Vegas, NV

Register Online at: www.PLSeducation.org

Sustaining Members

Following is a listing of sustaining members of the Nevada Association of Land Surveyors. Please remember that these firms and businesses, through their NALS membership, are supporting the aims and objectives of our association.

Aerial Mapping Consultants

4011 W. Cheyenne Avenue, Ste. A
North Las Vegas, NV 89032
T. (702) 291-2875
info@aerialmappingconsultants.com

AeroTech Mapping

2580 Montessori St., Ste. 104
Las Vegas, NV 89117
T. (702) 228-6277
F. (702) 228-6753
leotorres@atmlv.com

Berntsen International, Inc.

PO Box 8670
Madison, WI 53708
Reno, NV 89511
T. (608) 249-8549
awiegand@berntsen.com
www.berntsen.com

BizWatt, LLC

T. (805) 459-4047
fred@bizwatt.com

Carlson Software

T. (859) 568-8429
lrojas@carlsonsw.com

Dirtworks Positioning, LLC

T. (702) 405-6578
Tommy@DirtWorksPositioning.com

Heritage Surveying

T. (702) 474-6277
dlayton@hs4maps.com

LIDAR USA

T. (256) 274-1616
hunter@lidarusa.com

Monsen Eng. Supply

1190 Corporate Blvd.
Reno, NV 89502-2381
T. (775) 359-6671
F. (778) 359-6693
marty@monsenengineering.com

Nevada Transit & Laser

Joe Schneiderwind
5720 S. Arville, #110
Las Vegas, NV 89118
T. (702) 960-2833
joe@rmtlaser.com

Paul R. Wolf's Artisan Surveying Group Las Vegas' Pioche' McGill'

PO Box 33434
Las Vegas, NV 89133-3434
T. (702) 233-3451
twolf@ArtisanSurveying.com
www.ArtisanSurveying.com

Vertical Mapping Resources, Inc.

Joeseeph Bartorelli
18140 Wedge Parkway
Reno, NV 89511
T. (775) 737-4343
bartorelli@verticalmapping.com

FEMA Elevation Certificate

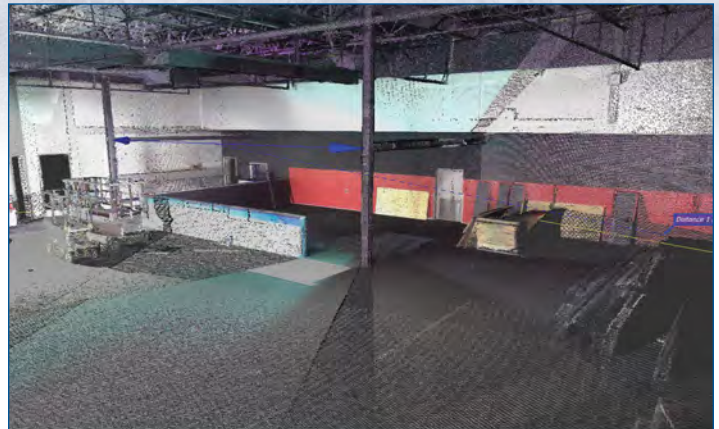
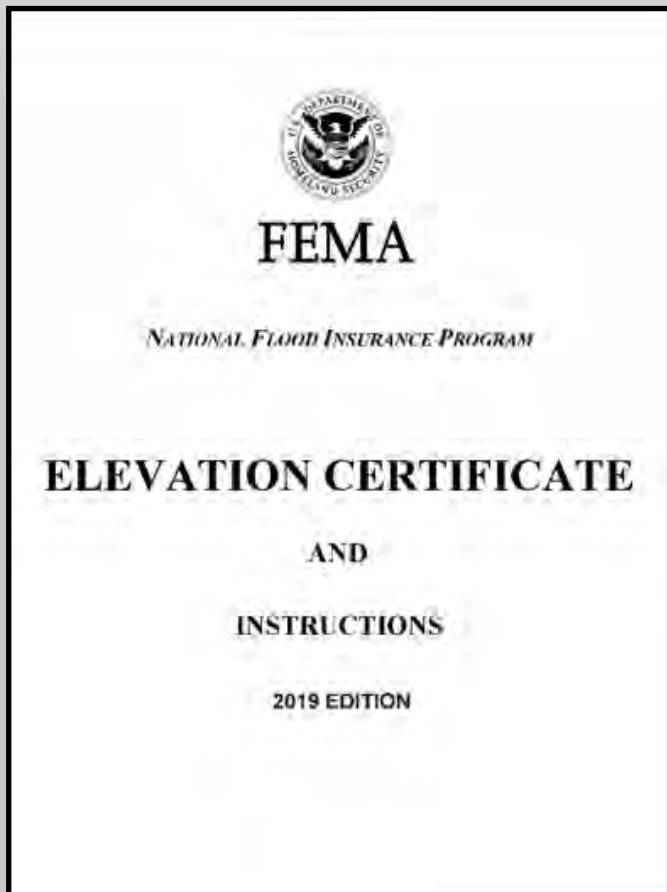
by Trent J. Keenan, PLS

As of February 21, 2020, there is a new Elevation Certificate and Instructions 2019 Edition available on the FEMA website.

OMB No. 1660-0008
Expiration Date: November 30, 2022

With a real quick glance before printing this edition of the Traverse, I am not seeing any changes in the form or instructions. If there are any changes, we will highlight them in a later edition.

https://www.fema.gov/media-library-data/1582295434639-fa8d10a7545ea0c773f1c3ab6601f167/FF086033_ElevCert_RE_11Feb2020.pdf



OUTPERFORM THE COMPETITION

**The most versatile terrestrial laser
scanner on the market**

For more information and to
schedule a demo, contact:

Luis Rojas

Regional Sales Director, Carlson Software

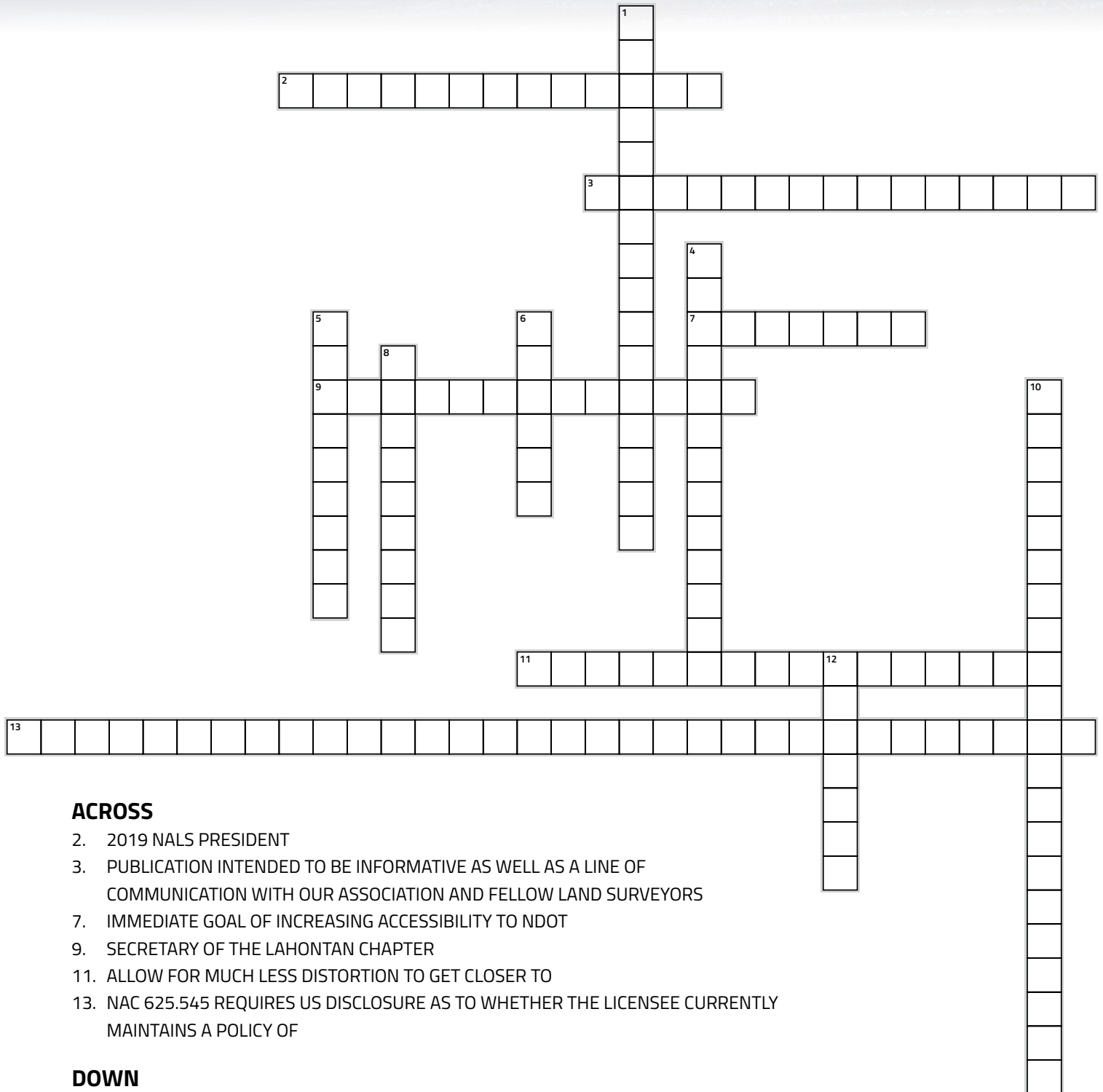
lrojas@carlsonsw.com

859 568 8429



carlsonsw.com/products/hardware/carlson-scan2k/

PUZZLE CORNER



ACROSS

2. 2019 NALS PRESIDENT
3. PUBLICATION INTENDED TO BE INFORMATIVE AS WELL AS A LINE OF COMMUNICATION WITH OUR ASSOCIATION AND FELLOW LAND SURVEYORS
7. IMMEDIATE GOAL OF INCREASING ACCESSIBILITY TO NDOT
9. SECRETARY OF THE LAHONTAN CHAPTER
11. ALLOW FOR MUCH LESS DISTORTION TO GET CLOSER TO
13. NAC 625.545 REQUIRES US DISCLOSURE AS TO WHETHER THE LICENSEE CURRENTLY MAINTAINS A POLICY OF

DOWN

1. NAC 625.545 REQUIRES US TO HAVE A
4. PROVIDES A QUICK CONVENIENT TOOL TO BE USED BY A LAND SURVEYOR TO HELP PRESERVE LAND SURVEY CORNERS
5. LOCATION OF THE 2020 CONFERENCE
6. YOU HAVE THE WORDS TO CHANGE A
8. HE WAS THE LAST ELECTED CLARK COUNTY SURVEYOR
10. ONE OF THE BASIC REQUIREMENTS CALLED OUT IN NAC 329.010
12. AMAZING VISUAL TOOL FOR OUTREACH TO POTENTIAL FUTURE SURVEYORS

EclipseCrossword.com

See puzzle key
on page
20

Lahontan Chapter Update

Prepared by Bill Ray, PLS
President - Lahontan Chapter

On December 5th, 2019 the NALS Lahontan Chapter held their Holiday Party at Zeppelin on South Meadows Parkway in Reno and saw approximately 25 people attend. From the feedback received everyone enjoyed the venue and the food. The buffet style dinner was held in the private room with a variety of appetizers, main courses and desserts, everyone found something to enjoy. The atmosphere was social and it was nice spending some quality time with fellow surveyors.

2020 is shaping up to be a banner year, the January Lahontan Chapter meeting held at La Posada Real saw a full house in the new venue. It is a good start to the new year, hopefully this is a trend that continues.

The speaker for the January meeting was the NALS State President, Greg Phillips who gave an update on the State NALS objectives and goals for this year. We are continuing to recruit speakers for the year and we look forward to a variety of speakers throughout the year.

We have an outstanding new board this year with Shane Trotter as Secretary, Todd Enke returning as Treasurer, Jake Johnson as President-Elect. I look forward to serving with the new board this year and I am excited to see what we can accomplish.


The Lahontan Chapter would like to thank Trent Keenan from Diamond Back Land Surveying for making and donating a "Sandbox" to the Lahontan Chapter. For those who have never seen a Sandbox, it is an amazing visual tool for outreach to potential future surveyors. It will be extremely helpful for attracting attention when we attend career days and fairs. Thanks again Trent!

The NALS Conference will be in Las Vegas this year and will be a Joint conference with California and Arizona. We encourage Lahontan Chapter members to attend if possible, it should be a good one.

I am honored to serve on the 2020 Lahontan Chapter Board and I look forward to what this year brings.



AERIAL PHOTOGRAPHY . DIGITAL MAPPING . ORTHOPHOTOGRAPHY . GIS SERVICES
LIDAR TECHNOLOGY . REMOTE SENSING . DRONE/UAV MAPPING



VERTICAL MAPPING RESOURCES
an evolution in land information

1610 Montclair Ave, Suite D
Reno, NV 89509
775.737.4343

verticalmapping.com

Southern Nevada Chapter Update

Prepared by Nick Ariotti, PLS
President - SNALS Chapter

The SNALS 2019 Christmas party was a blast. We had over 70 in attendance and were able to share stories of life, work, and the future with our colleagues. The new Chapter Board was sworn in and we had great entertainment provided by the Great Jeremiah Johnson. Everyone had a great time. Special thanks to our sponsors including: Aerotech Mapping, Diamondback LS, Horrocks Engineers, E.G. Radig Inc., and Tri Core.



Although we are still looking to fill one more seat on our Chapter Board, I am very happy to report that we have a lot of talented and experienced members serving and I am confident with their support SNALS is going to have a great year. If you are interested in participating on the Board or would just like to be more involved in the Chapter, please reach out as there are plenty of jobs but big and small.

I would like to see our Chapter work to build our Young Surveyor Network (YSN). If you know of someone who fits this category, please encourage them to participate in the YSN.

Looking forward to a great year!



NALS Board of Directors Meeting

Friday, January 10th, 2020 • Odyssey Engineering • Sparks, Nevada

MINUTES

CALL TO ORDER

The meeting was called to order at 8:31 AM.

ROLL CALL

Greg Phillips, President
Justin Moore, Vice President
Robert Carrington, Secretary/Treasurer
Jason Higgins, Immediate Past President
Crissy Willson, Executive Director

Nick Ariotti, Director
Todd Enke, Director
Bill Ray, Director
Jason Higgins, Director

Guests: Kevin Almeter, Trent Keenan, Nick Montoya, Sarah Walker,

ADDITIONS/CHANGES TO AGENDA

Add: 2022 Datum Ad-Hoc Committee

PLEDGE OF ALLEGIANCE

Todd Enke led the Pledge of Allegiance.

OATH OF OFFICE

Immediate Past President Jason Higgins installed the 2020 Board of Directors.

2022 DATUM

Kevin Almeter has been appointed as the Chair of the 2022 Datum Ad-Hoc Committee. Also serving on the Committee is Jon Wooten, Mike Kidd, and Greg Phillips.

The NGS benchmarks project is still underway. Jon Wooten will provide an interactive spreadsheet that can be emailed to membership to recruit volunteers for this project.

PRESIDENT'S REPORT

Report included in agenda.

President Greg Phillips reported he would like to continue the momentum created last year under the direction of Immediate Past President Jason Higgins and the strategic planning meeting. Greg would like to focus on professional practices and education of the profession.

COMMITTEE APPOINTMENTS

President Greg Phillips reported committee chair appointments, as follows:

Advanced Education – Trent Keenan
Board of Registration Liaison – Jason Higgins, Kevin Almeter
Bylaws – Nancy Almanzan
Communications/Publications (NV Traverse Editor) – Trent Keenan
Continuing Education/Conference – Nancy Almanzan
Legislative – Robert Carrington
Membership – Justin Moore
NDOT Ad-Hoc – Greg Phillips

Nominating Committee – Jason Higgins
NSPS Director – Nancy Almanzan
Professional Practices – Justin Moore
Outreach – Justin Moore
Young Surveyors Network – Sarah Walker, Nick Ariotti
WFPS Delegate – Trent Keenan, Greg Phillips
Past President's Advisory Council – Jason Higgins

MOVED by Robert Carrington and **SECONDED** to approve the 2020 Committee Chair appointments. **MOTION CARRIED.**

Each year the NALS Board of Directors appoints the Principal Directors of the NALS Education Foundation. The Principal Directors then appoint the General Directors to complete their Board. Crissy Willson reported that Carl CdeBaca will not be continuing on the Education Foundation as he has moved out of state.

MOVED by Robert Carrington and **SECONDED** to appoint Jerry Juarez, Nancy Almanzan, Bill Kruger, and Alan Dill as Principal Directors of the Nevada Land Surveyors Education Foundation. **MOTION CARRIED.**

SECRETARY/TREASURER

Report included in agenda.

Each year the Secretary and Treasurer have the option of delegating specific administrative duties such as recording minutes and bookkeeping to the Executive Director.

MOVED by Robert Carrington and **SECONDED** to delegate all duties of the Secretary/Treasurer to the Executive Director except attending meetings and signing checks payable to Association Management Services, Dorothy Calejari, or Crissy Willson. **MOTION CARRIED.**

Secretary/Treasurer Robert Carrington reviewed the financial statements as included in agenda. Robert reported that we have added funds to the investment account and have reached our goal of reserve funds.

MOVED by Justin Moore and **SECONDED** to accept the financials as included in the agenda. **MOTION CARRIED.**

Resolution updating signors on NALS bank accounts was included in the agenda.

MOVED by Justin Moore and **SECONDED** to adopt the resolution authorizing signors on the account. **MOTION CARRIED.**

ADVANCED EDUCATION

The second professor at Great Basin College (GBC) has been authorized and the search has started. The NALS Education Foundation has authorized funds requested by GBC for review of the program. NALS and NALS Education Foundation will continue to work with Byron Calkins to assist in keeping the GBC program strong.

CONTINUED ON NEXT PAGE ►

BOARD OF REGISTRATION

Report included in agenda.

Jason Higgins will be attending the upcoming Professional Association Liaison (PAL) Council meeting in Las Vegas. Kevin Almeter will serve as the northern liaison and attend meetings when held in the Reno area.

COMMUNICATIONS/PUBLICATIONS

Trent Keenan has agreed to serve as Editor of the Nevada Traverse. The Board of Directors and Executive Office will support Trent in this role by assisting with logistics and helping to solicit articles. The Board extended their gratitude to Trent for taking on this role.

CONFERENCE

Crissy Willson provided a report of the Conference. This year's conference will be joint conference with Arizona (APLS), California (CLSA), and NALS. Registration for the conference is open and the early bird cut-off date is March 6th. It is anticipated that the room block will sell out so attendees are encouraged to reserve their room at the Luxor soon.

Crissy reported receiving a two year contract for the Silver Legacy (2021 and 2023). CLSA will be voting at their February meeting regarding the invitation from NALS for a joint Conference.

MOVED by Robert Carrington and **SECONDED** to authorize Crissy Willson to sign 2 year contract with Silver Legacy for 2021 and 2023. **MOTION CARRIED.**

The 2022 Conference will be a Western Regional Surveyor Conference in Las Vegas.

MEMBERSHIP

Report included in agenda.

NALS membership continues to rise.

NDOT AD HOC COMMITTEE

Report included in agenda.

This committee has been successful in developing a communication channel with NDOT and creating a path for access to the NDOT internal database. This access will bridge the gap until the anticipated GIS platform can be fully developed.

The committee will continue to meet and look at new ways to work together for the benefit of the profession.

NSPS DIRECTOR

Nancy Almanzan will attend the next NSPS meeting which will be held in April in conjunction with Lobby Day.

Paul Burn continues to serve on the NSPS ALTA Committee. As NSPS does not have a separate fund for this committee, Paul has asked that NALS provide travel reimbursement to attend their summer meeting.

The Board considered this request and while they believe that NSPS committee travel should be funded by NSPS, they agree that Paul's participating on this committee is important and benefits the profession and NALS.

MOVED by Robert Carrington and **SECONDED** to allocate up to \$1500 for travel to the NSPS ALTA Committee meeting. **MOTION CARRIED.**

OUTREACH

The NALS Board of Directors discussed the importance of outreach. Based on the membership survey sent last year and the strategic planning meeting that followed, an expanded outreach program is needed. Justin Moore will serve as the Outreach Committee Chair and will coordinate all outreach efforts. The importance of utilizing the Young Surveyors Network (YSN) in outreach efforts was also discussed and Justin will include the YSN whenever possible.

TrigStar will fall under the Outreach Committee but the Board discussed the fact that it takes a lot of additional coordination and a true champion of the program in order to make it successful. Jerry Juarez has been chairing the TrigStar program for many years and is willing to continue in the role.

MOVED by Todd Enke and **SECONDED** to appoint Jerry Juarez as a TrigStar Coordinator as a sub-committee of Outreach Committee. **MOTION CARRIED.**

YOUNG SURVEYORS NETWORK (YSN)

Report distributed at the meeting.

The YSN recently held a meeting in Reno that was well attended. Membership in the YSN continues to grow.

The YSN presented an anticipated budget of \$4000 for the year to cover the cost of quarterly meetings and travel to YSN meeting. NALS has budgeted up to \$2000 in funds and the NALS Education Foundation has budgeted up to \$2000. If additional programs are identified that require additional budget NALS will review and the possibility of YSN sponsors may be used in the future.

CHAPTER REPORTS

Reports included in agenda.

Both Lahontan and SNALS held successful holiday parties.

Nick Montoya will work on helping to revitalize the Great Basin Chapter.

MEETING SCHEDULE

March 28-31, 2020 – Conference

May 1, 2020 -Board Meeting (Las Vegas at DBLS)

July 30, 2020 – Board Meeting (Sparks at Odyssey Eng.)

October 16, 2020 – Board Meeting (Las Vegas at DBL)

ADJOURNMENT

The meeting was adjourned at approximately 12:30 PM.



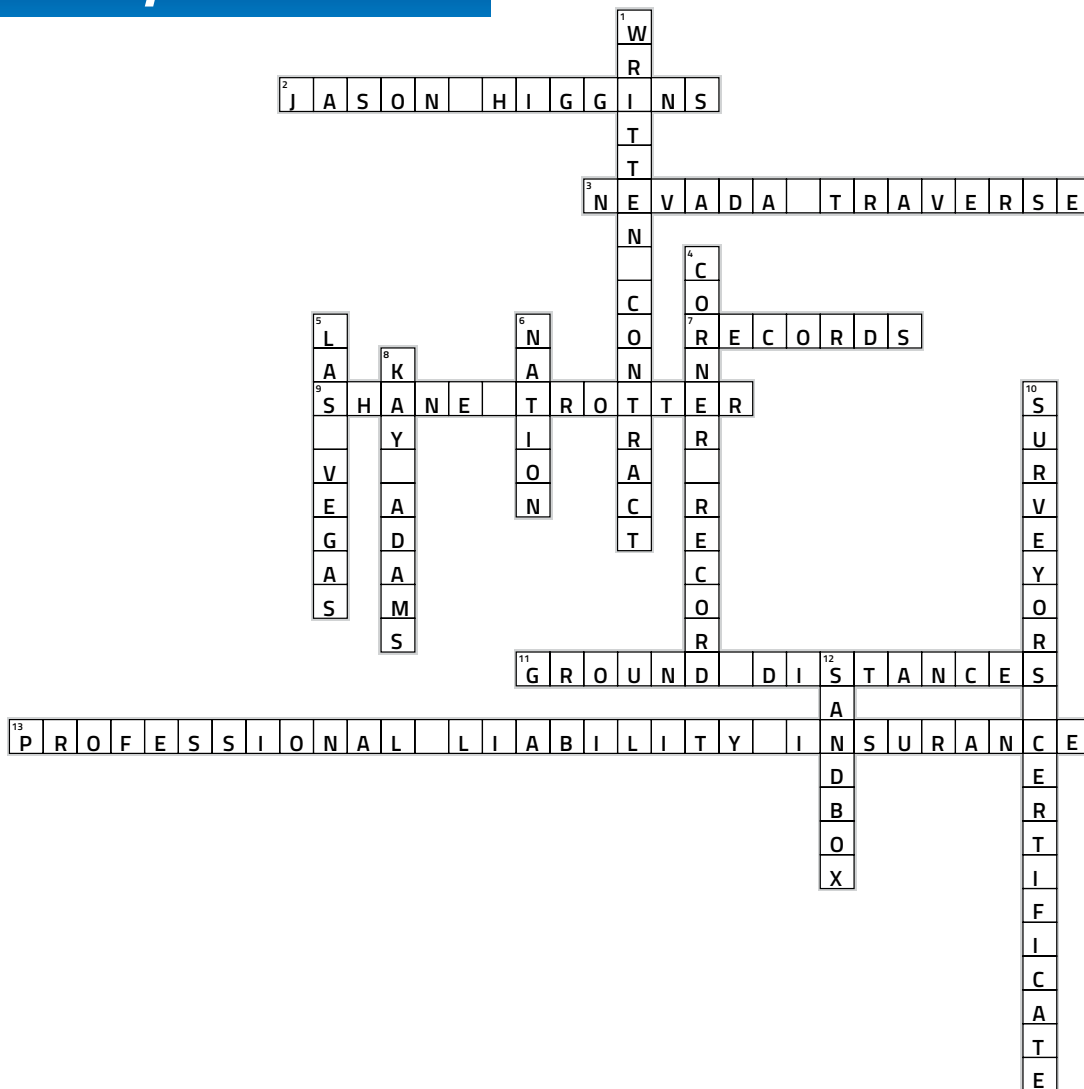
the folks that have been working on this on behalf of our state so far, including Michael Kidd, Jon Wooten, Jason Higgins, and our new committee chair Kevin Almeter.

The 2020 Conference is rapidly approaching. This is shaping up to be another great conference in Las Vegas at the Luxor. As many of you know already this is a joint conference with Nevada, California, and Arizona. I am so glad that we are able to partner with the other states. The larger conferences allow us to showcase a greater variety of speakers and programs. We have had great success filling the exhibit hall this year and it sounds like registrations are rolling in already. Please make sure and join us this year March 28-31. Send your people and pick up a sponsorship if you can. Conference info can be found at PLSeducation.org

I am looking forward to a great year. Thank you again for allowing me to serve as your President and I hope to see you in Las Vegas at the Conference.



Puzzle Key *from page 17*



ADVERTISER INDEX

for this Issue

Advertiser

Page No.

Berntsen International.....	11
Carlson.....	15
Monsen Engineering Supply.....	Inside Front Cover
Office Depot.....	Inside Rear Cover
Surv-Kap.....	10
Vertical Mapping Resources.....	17
Wood Rodgers.....	10
Nevada Transit & Laser.....	Outside Back Cover

Members have spoken and we are listening! To fill the void left by the ending this past July of the NSPS Radio Hour, the weekly radio show hosted by Executive Director Curt Sumner, we are proud to announce our new podcast, **"SURVEYOR SAYS!"** featuring all things surveying.

SURVEYOR SAYS!




NSPS
THE PODCAST



Available on
Podbean



Podcast Available on
iTunes



Listen on
Spotify



Listen on
Google Podcasts

<https://surveyorsays.podbean.com/>

GET SPECIAL DISCOUNTS at Office DEPOT with your NALS MEMBERSHIP

The program includes:

- Savings of up to 70% on commonly used items
- FREE next-business-day delivery
- Thousands of products in stock
- Unparalleled expertise
- Ultimate shopping convenience by phone, fax or online
- The latest in office technology
- Office Supplies, Furniture and More!

**OFFICE DEPOT
IS YOUR
ONE STOP SHOP!**

Contact NALS To Sign Up
nals@nvlandsurveyors.org
(888) 994-3510

**Office
DEPOT**

Taking Care of Business



The Nevada Association of Land Surveyors
NALS Central Office
526 So. E Street
Santa Rosa, CA 95404

Address Service Requested

Presorted
Standard
U.S. Postage
PAID
San Dimas, CA
Permit No. 410

The Ultimate Total Station

GT SERIES ROBOTIC TOTAL STATIONS



fastest

**robotic motor technology
available**



ULTRASONIC DIRECT DRIVE MOTORS

**30% SMALLER AND LIGHTER WITH
MORE FUNCTIONALITY**

TURNING SPEED OF 180° PER SECOND

ADVANCED ULTRATRACK TECHNOLOGY

**AVAILABLE IN TWO MODELS
GT-500 AND GT-1000**


Nevada Transit & Laser
Las Vegas 702-253-1789

 **TOPCON**